



BOLD
LIVING

create your dream



EVERLEIGH DISPLAY HOMES

SOPHIA 253 | NEWPORT 297



create your dream

Bold Living builds beautiful homes that bring dreams to life, creating places families will love. Every Bold home makes a unique statement, thanks to contemporary design, attention to detail, flexibility and quality in construction.

As a family owned and operated business, we understand that building your own new home is so much more than choosing a floor plan, colours, bricks and mortar. It's about the experience, and the exciting journey you're embarking on. Creating your dream and a place to enjoy a life that fulfils all desires.

Our pledge to you is innovative home designs, contemporary and timeless style, exceptional customer service and build quality.

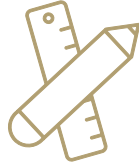


OUR PROMISE



25 YEAR GUARANTEE

Every Bold Living home is backed by our 25year structural guarantee. We choose only to use quality materials and trusted trades people, allowing us to be recognized as an industry leader. You can be completely confident that you've made the right decision building with Bold Living, letting us create a home that proudly stands the test of time.



TOTAL FLEXIBILITY

Build your dream with Bold and you can take full advantage of our uniquely flexible approach. We give you the freedom to pick and choose the features, finishes, appliances and styles you prefer from our Smart, Contemporary, Sanctuary and Saba design collections, and incorporate them into the home you're going to love. It's all about personality and individuality, and nobody makes it easier than Bold.



ULTRA CARE

Customer service is so much more than a slogan to us at Bold Living. We build every home with care and quality in construction, that others simply cannot match. Every member of the Bold Living team shares our love of the business and commitment to excellence. That commitment continues well after you've moved in, with our specialised Ultra Care team ready to serve you even after your home is complete.



FIXED PRICE

Getting a quote to build your new home can be challenging and even a bit confusing. Especially when each builder offers something different and none of them can tell you how much a house will actually cost to build. We do things differently. Our experienced sales team has all the information at their fingertips to give you a fixed price quote, on the spot, for any of our standard designs. All you have to do is ask. We don't require a deposit and we won't take weeks to get back to you.



QUALITY ASSURANCE

As you set out on the exciting journey that is building a new home, it is reassuring to know that Bold Living has systems and check procedures in place every step of the way. Like our 150-point quality check carried out by our experienced quality assurance team during construction covering all internal and external aspects of your home. With personalised reports and the opportunity to be present during inspections, we guarantee your new Bold Living home is completed to the highest standard of quality and workmanship.



TURN KEY

Choose a Bold Living Turn Key package and your new home is fully finished and ready to move into, complete with everything you need to live comfortably. It's the effortless, easy home building option, offering quality features inside and out – from window treatments to floor coverings, light fittings, landscaping, fencing and even the letterbox. Simply turn the key in your new Bold Living front door, arrange your furniture and start sending the housewarming invitations!



OPEN 6 DAYS

NO APPOINTMENT NEEDED

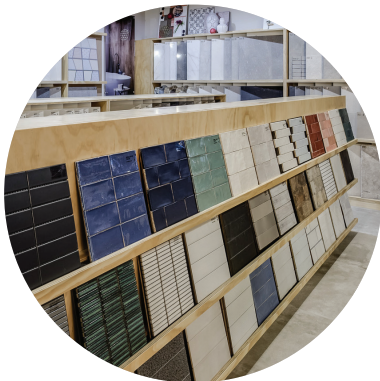
At Evolve, everything you need to create your dream and tell your story is all in one place. We have taken interior design and home styling to an entirely new level, creating the most innovative, comprehensive and convenient display of design trends.

Enter a world of opportunity, showcasing many of Australia's leading brands in bath and kitchen fittings, appliances, building materials, floor coverings and much more.

Our experienced team of interior designers is at hand to guide you through to creating your ultimate dream.

Relax and take a break at our onsite café, leave the kids in our dedicated kids' corner. We invite you to explore endless opportunities at Evolve 6 days a week.

create your *style*



MULTI AWARD WINNERS

Flexibility, quality construction and outstanding service delivered by our hand-picked team. Just three of the key elements that have earned Bold numerous Housing Industry Australia Awards for our premium work, and accolades from the most important people of all – our very happy clients.



smart *inclusions*

AFFORDABLE DREAM LIVING

Whether you're just starting out, a family with growing youngsters or a savvy investor, Smart Inclusions provides a range of clever designs that combines livability and quality with affordability. We've hand picked the stylish turn-key inclusions in this collection so that all the hard work in your new Bold home is done for you, long before you move in – right down to the fine details.



contemporary *inclusions*

INSPIRING HOME DREAMS

We know you'd love your new dream home to be clean-lined, modern, comfortable and affordable. Our Contemporary Inclusions collection is all that and more. We're proud to present a range of contemporary living environments you'd be delighted to call your own.



SABA *inclusions*

LUXURY MAKES A STATEMENT

The individual, original world of Saba Living was created for you. We turn the everyday event of building into a magnificent bespoke experience. Working with you to create a home that lives and breathes your individuality and ideas, giving you the professional supports and undivided attention that make them real. A home that allows you to live your own story.



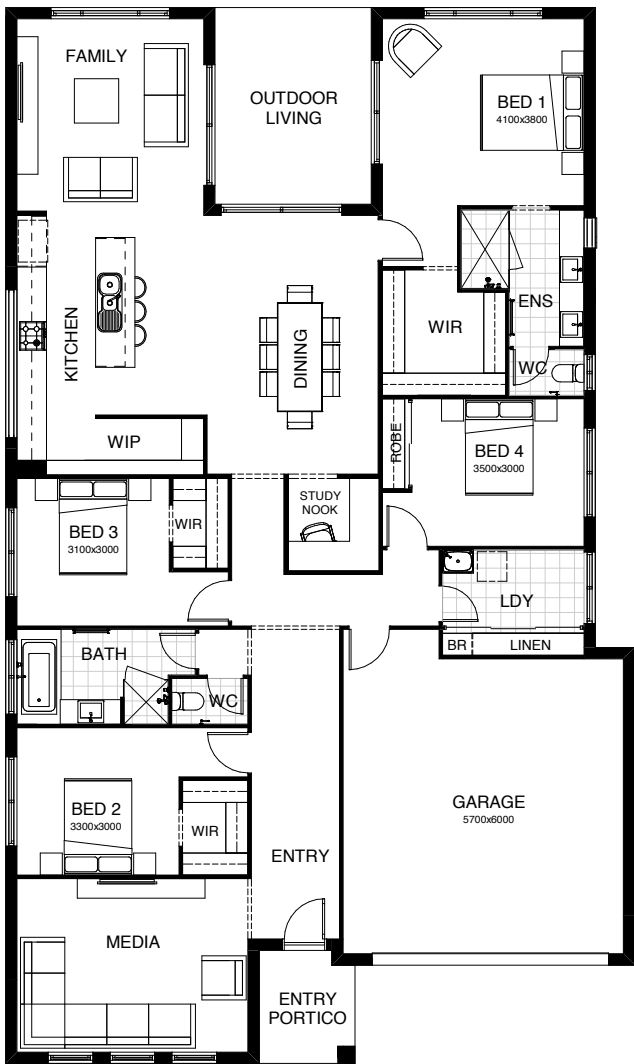
SANCTUARY *acreage living*

DESIGNS FOR A LARGER LIFE

The Sanctuary collection is perfectly suited to the spacious, gracious acreage life. Utilise the true luxury of space to create your dream – impressively large alfresco entertaining areas, light airy interiors, generous proportions and fine quality finishes.

SOPHIA 253

Another four bedroom home that is cleverly designed for families and entertaining. Featuring a seamless flow between kitchen, dining and alfresco, this design presents irresistible entertaining options! Including a butlers pantry and separate study, this home has everything!



FRONTAGE 14m

EXTERIOR LENGTH 21.48m

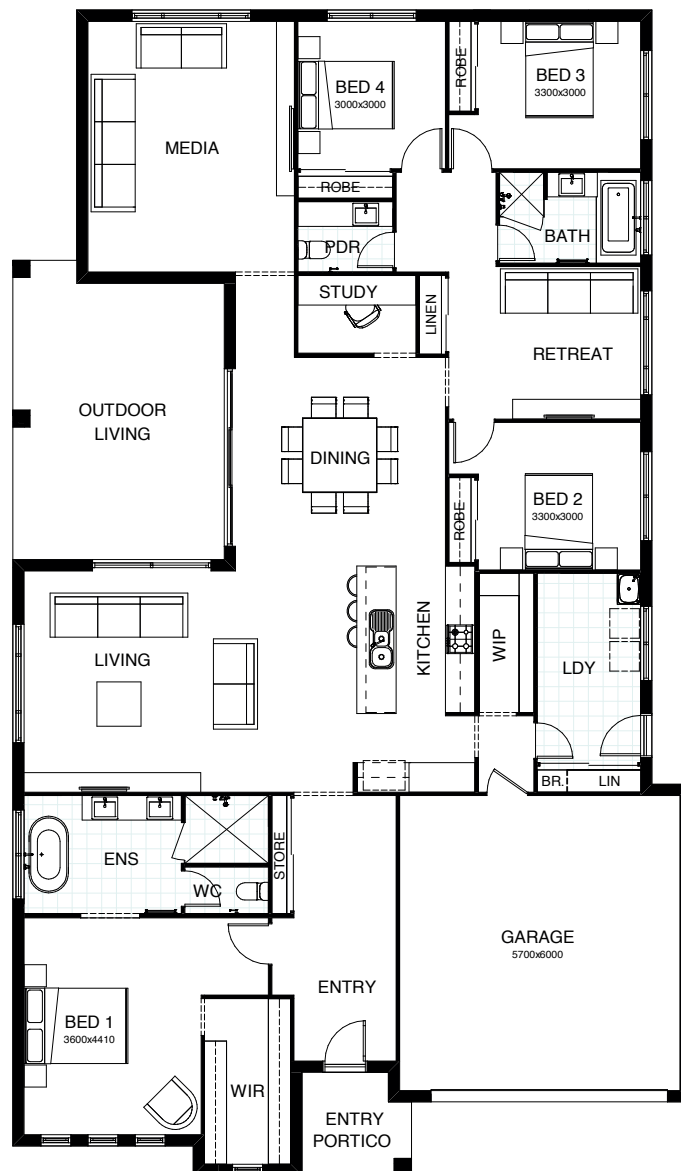
TOTAL FLOOR AREA 253.1m²

EXTERIOR WIDTH 12.8m

4 | 2 | 1 | 2 | 2

NEWPORT 297

Family living is the focus in this cleverly-executed, spacious one level design. Features comprise four bedrooms, including a master suite with walk-in robe, separately zoned children's rooms and their own retreat area, plus a large media room and a study. The open plan living, kitchen and dining link directly with an inviting outdoor entertaining space.



FRONTAGE 15m

EXTERIOR LENGTH 23.71m

TOTAL FLOOR AREA 297.2m²

EXTERIOR WIDTH 13.8m

 4 |
  3 |
  1 |
  2.5 |
  2



VISIT A BOLD LIVING DISPLAY CENTRE

BURPENGARY

NORTH HARBOUR ESTATE

ATHENA 349
& SOPHIA M 22

Brook Crescent,
Burpengary Q 4505

COOMERA

FORESHORE ESTATE

ELWOOD 254
KENSINGTON 367

Forrestdale Street,
Coomera Q 4209

CALOUNDRA

AURA ESTATE

FELIX 168
& KENSINGTON 327

Leslie Crescent,
Caloundra Q 4551

GREENBANK

EVERLEIGH ESTATE

SOPHIA 253
& NEWPORT 297

Olive Avenue,
Greenbank Q 4124

NARANGBA

RIDGEVIEW ESTATE

AVERY 232
& EMERSON 260

Ridge Parade,
Narangba Q 4504

NEWPORT

NEWPORT 297
& ZEUS 363

Rani Street,
Newport Q 4020

PARK RIDGE

CARVER'S REACH ESTATE

ASHTON 252 & AVERY 226

Cypress Street,
Park Ridge Q 4125

SOUTH RIPLEY

PROVIDENCE ESTATE

ARDANA 270, ATHENA 349,
SOPHIA M 22, STOCKHOLM 270

Soul Crescent,
South Ripley Q 4306

SPRINGFIELD

KALINA ESTATE

LENNOX 337
& OSLO 304

Kingfisher Street,
Springfield Q 4300

TOOWOOMBA

THE AVENUE'S ESTATE

EMERSON 300
Cronin Road,
Highfields Q 4352

CALOUNDRA



BURPENGARY



NARANGBA



NEWPORT



TOOWOOMBA



SOUTH RIPLEY



SPRINGFIELD



GREENBANK

PARK RIDGE



COOMERA

1800 GO BOLD

49 Flinders Pde, North Lakes Q 4509

www.boldliving.com.au

create your dream