



At Evolve, everything you need to create your dream and tell your story is all in one place. We have taken interior design and home styling to an entirely new level, creating the most innovative, comprehensive and convenient display of design trends.

Enter a world of opportunity, showcasing many of Australia's leading brands in bath and kitchen fittings, appliances, building materials, floor coverings and much more.

Our experienced team of interior designers is at hand to guide you through to creating your ultimate dream.

Relax and take a break at our onsite café, leave the kids in our dedicated kids' corner. We invite you to explore endless opportunities at Evolve 7 days a week.

**create your**  
*style*



**OPEN 7 DAYS**  
**NO APPOINTMENT NEEDED**

# VISIT A BOLD LIVING DISPLAY CENTRE

## BAHRS SCRUB BROOKHAVEN ESTATE

BALLARAT 215  
& SOPHIA 22

Menora Road  
Bahrs Scrub Q 4207

## GREENBANK EVERLEIGH ESTATE

SOPHIA 253  
& NEWPORT 297

Olive Avenue,  
Greenbank Q 4124

## BURPENGARY NORTH HARBOUR ESTATE

ATHENA 349  
& SOPHIA M 22

Brook Crescent,  
Burpengary Q 4505

## NEWPORT

NEWPORT 28  
& ZEUS 333

Spinnaker Boulevard  
Newport Q 4020

CALOUNDRA



## CALOUNDRA AURA ESTATE

FELIX 168  
& KENSINGTON 327

Leslie Crescent  
Caloundra Q 4551

## NORTH LAKES

NEWPORT 216  
& STOCKHOLM 267

Attenborough Circuit  
North Lakes Q 4509

BURPENGARY



NEWPORT



NORTH  
LAKES

## QUAY, NEWPORT

SORRENTO 523

Quay Circuit  
Newport Q 4020

UPPER  
KEDRON



## SOUTH RIPLEY PROVIDENCE ESTATE

ARDANA 270, ATHENA 349,  
SOPHIA M 22, STOCKHOLM 270

Soul Crescent  
Ripley Q 4306



PALLARA

## UPPER COOMERA

FORSHORE ESTATE

ELWOOD 254  
KENSINGTON 367

Forresdale Street  
(off Foxwell Road)  
Upper Coomera Q 4209

SOUTH  
RIPLEY



BAHRS  
SCRUB

GREENBANK

UPPER  
COOMERA



## UPPER KEDRON

ELLENDALE ESTATE

STOCKHOLM M 304

Canvey Road  
Upper Kedron Q 4055

## 1800 GO BOLD

49 Flinders Pde, North Lakes Q 4509

[www.boldliving.com.au](http://www.boldliving.com.au)

*create your dream*



**BOLD  
LIVING**

*create your dream*



**EVERLEIGH DISPLAY HOMES**

SOPHIA 253 | NEWPORT 297

# PROUDLY AUSTRALIA'S NO.1 MEDIUM BUILDER

Bold Living is honoured to have been named Australia's No.1 Medium Builder at the 2018 Australian Housing Awards. This award is the industry's most prestigious accolade, and recognises professionalism in all areas of the business.



## SMARTLIVING BY BOLD



### AFFORDABLE HOME INCLUSIONS

Whether you're just starting out, a family with growing youngsters or a savvy investor, Smart Living provides a range of clever designs that combines livability and quality with affordability. We've hand picked the stylish turn-key inclusions in this collection so that all the hard work in your new Bold home is done for you, long before you move in – right down to the fine details. It couldn't be easier or more convenient. And our high standards of design and finish mean you'll be so proud to show it off.

## contemporaryliving BY BOLD



### INSPIRING HOME INCLUSIONS

We know you'd love your new dream home to be clean-lined, modern, comfortable and affordable. Our Contemporary Living collection is all that and more. We're proud to present a range of inspiring living environments you'd be delighted to call your own. And all complete with an extensive array of 'must have' features and fittings – high quality, forever stylish, yet budget friendly. It's all about making your home perfect for you, ensuring it's complete with the things that really matter. So, all you have to do is move in and enjoy living.

## SABALIVING BY BOLD

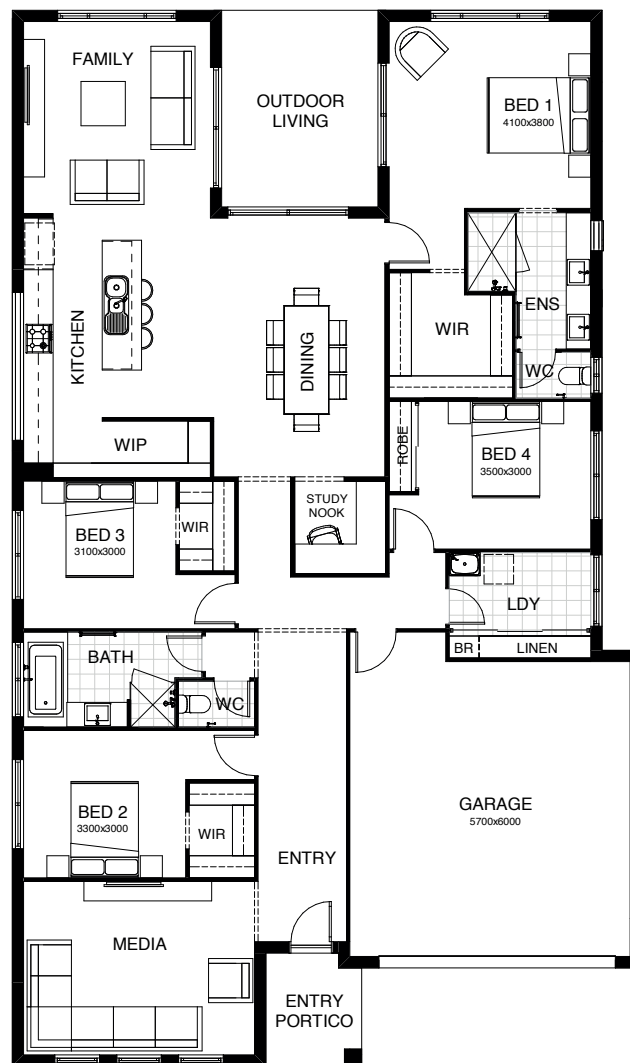


### LUXURY HOME INCLUSIONS

The individual, original world of Saba Living was created for you. You have an unerring eye for what you love, what speaks to your heart and soul. When it comes to building the new home that fully expresses your dreams, your standards are unwavering. We turn the everyday event of building into a magnificent bespoke experience. Working with you to create a home that lives and breathes your individuality and ideas.

# SOPHIA 253

Another four bedroom home that is cleverly designed for families and entertaining. Featuring a seamless flow between kitchen, dining and alfresco, this design presents irresistible entertaining options! Including a butlers pantry and separate study, this home has everything!



**FRONTAGE** 14m

**EXTERIOR LENGTH** 21.48m

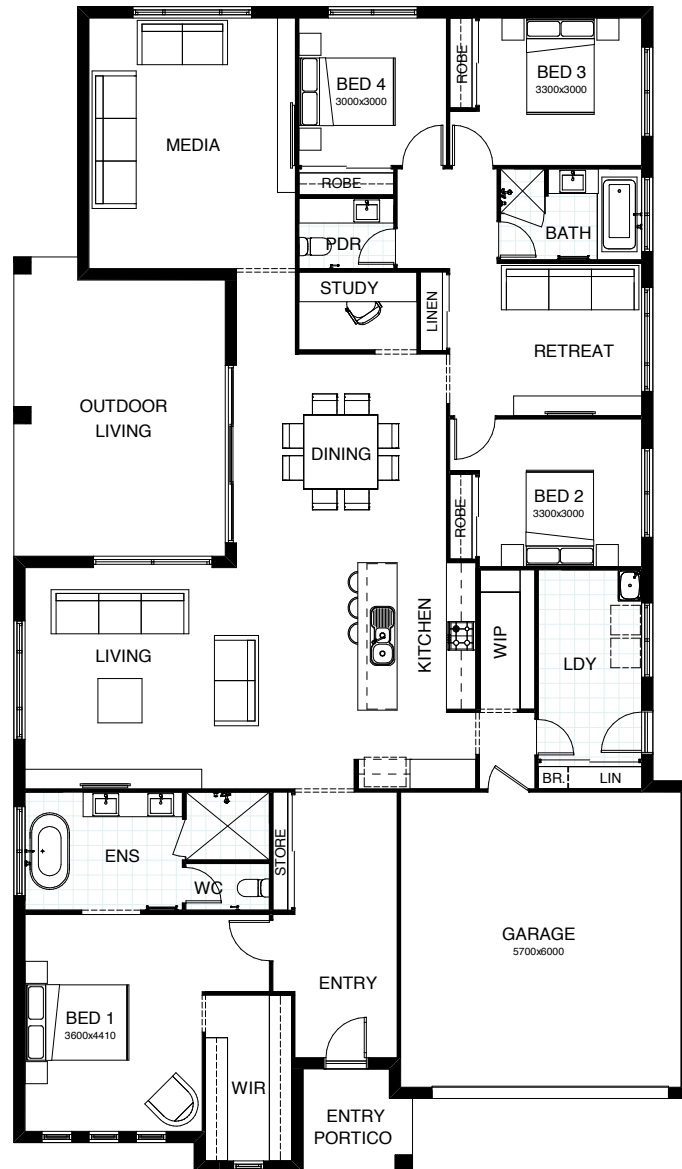
**TOTAL FLOOR AREA** 253.1m<sup>2</sup>

**EXTERIOR WIDTH** 12.8m



# NEWPORT 297

Family living is the focus in this cleverly-executed, spacious one level design. Features comprise four bedrooms, including a master suite with walk-in robe, separately zoned children's rooms and their own retreat area, plus a large media room and a study. The open plan living, kitchen and dining link directly with an inviting outdoor entertaining space.



**FRONTAGE** 15m

**EXTERIOR LENGTH** 23.71m

**TOTAL FLOOR AREA** 297.2m<sup>2</sup>

**EXTERIOR WIDTH** 13.8m

