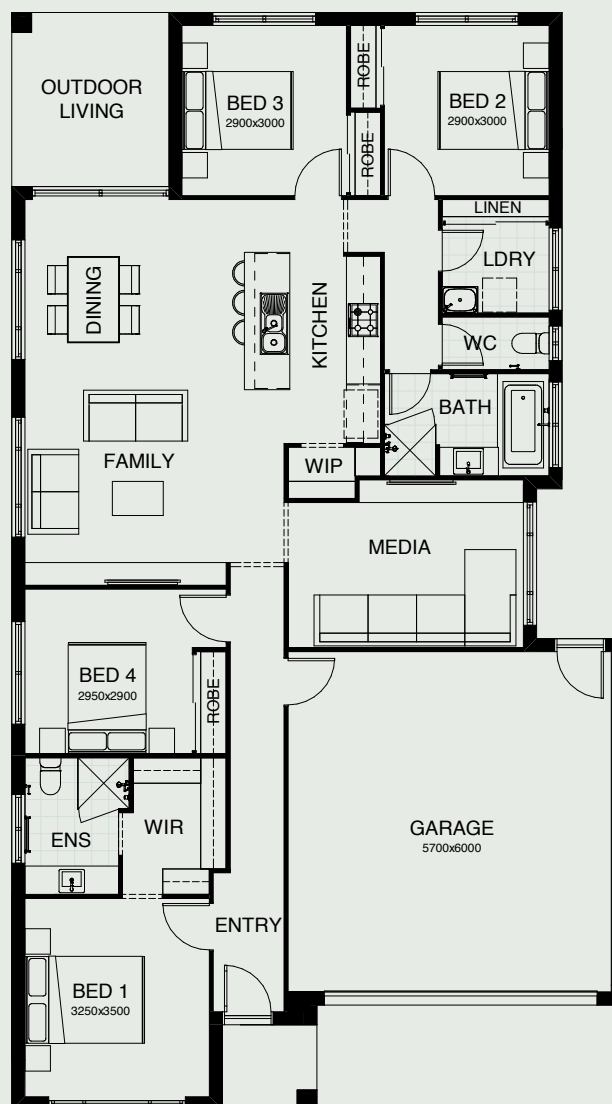


# AVERY 185

Introducing a floor plan that's supremely inviting! This 4 bedroom home expertly ticks all the boxes – including an integrated family room, dining space and open kitchen, opening directly onto an outdoor living area that's perfect for entertaining. There's also a separate media room, a study nook, and a spacious master suite complete with a generously-sized walk-in robe.



FRONTAGE	12.5m
EXTERIOR LENGTH	19.35m
EXTERIOR WIDTH	10.8m
TOTAL FLOOR AREA	185.6m <sup>2</sup>



4 | 2 | 1 | 2 | 2

*create your dream*

For further information, please visit [www.boldliving.com.au](http://www.boldliving.com.au)

