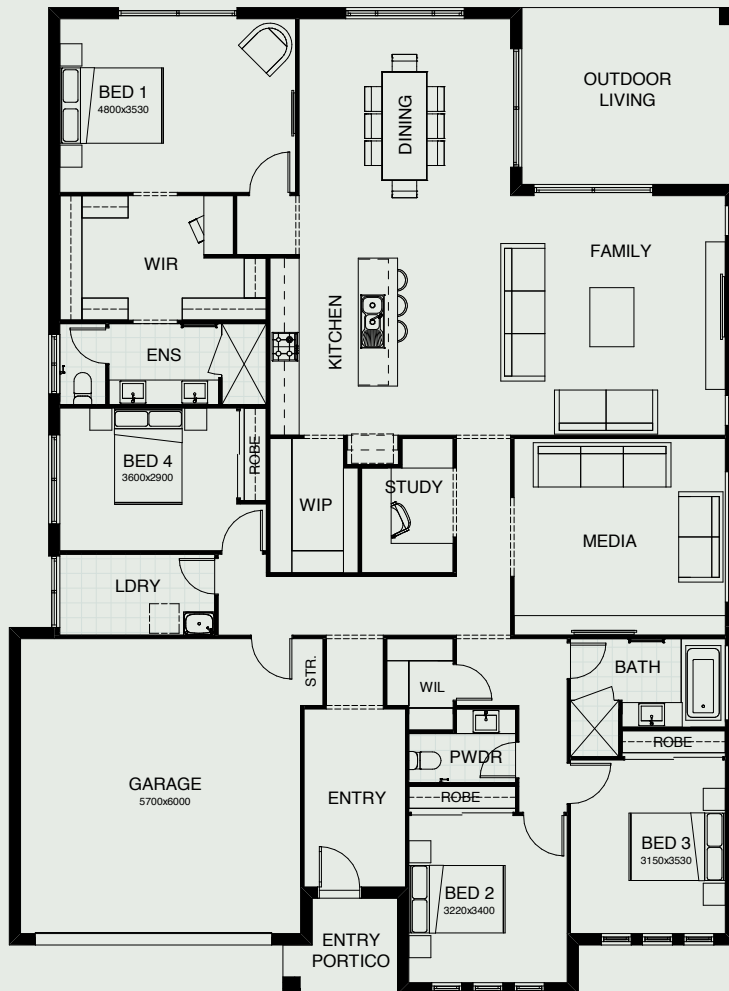


# EMERSON 277 M

The Emerson is an intelligently designed family home delivering luxury without compromise. You're spoilt with two generous living spaces, a study and four bedrooms including a master suite designed to impress. The kitchen, living and dining is located at the heart of the home providing easy access to the rest of the house and a seamless flow directly to the outdoor living space.



FRONTAGE	16m
EXTERIOR LENGTH	20.07m
EXTERIOR WIDTH	14.8m
TOTAL FLOOR AREA	277.8m <sup>2</sup>



*create your dream*

For further information, please visit [www.boldliving.com.au](http://www.boldliving.com.au)

