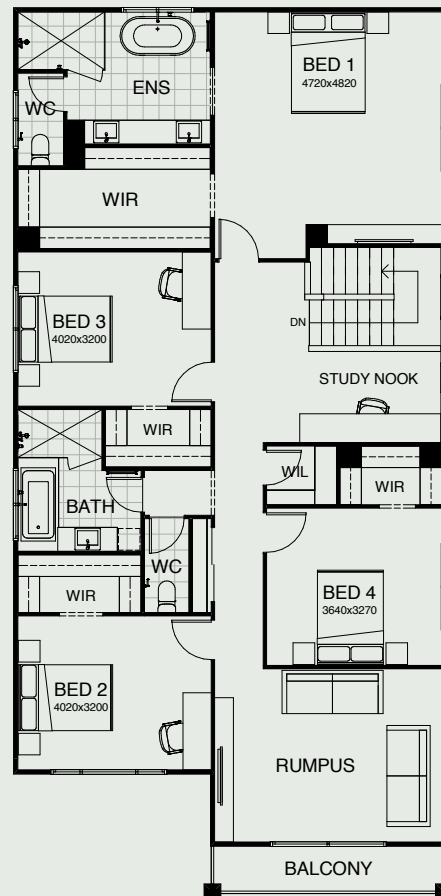
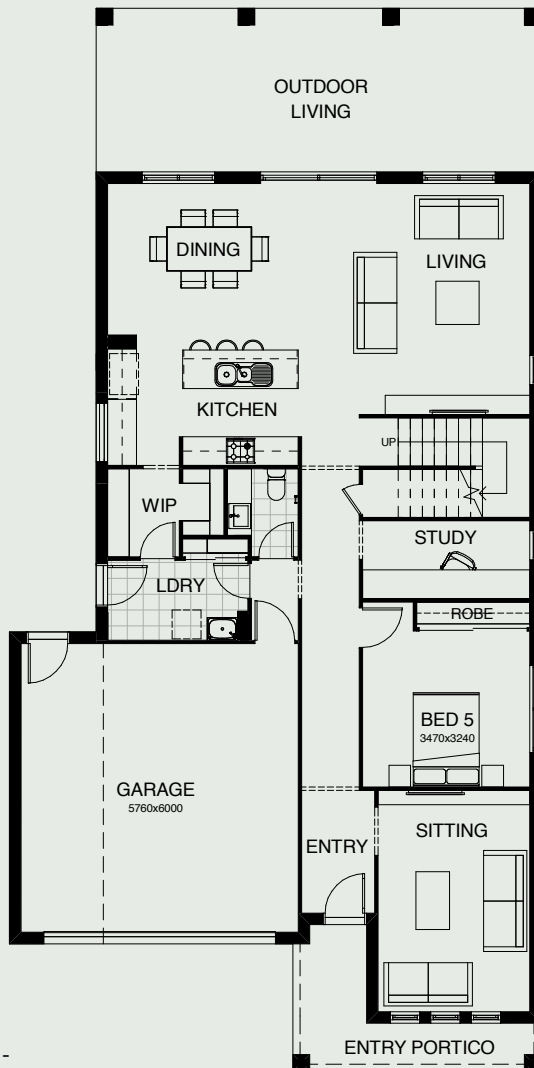


ZEUS 359

The best of contemporary architecture combines with intelligent design thinking in this two storey home. Four bedrooms, including a grand master suite with a massive walk-in robe, are upstairs. There's also a well-placed kids' retreat. Downstairs there's a large study, a walk-in pantry and integrated open plan living spaces tempting you out to the alfresco area.



FRONTAGE	12.5m
EXTERIOR LENGTH	22.09m
EXTERIOR WIDTH	11.05m
TOTAL FLOOR AREA	359.5m ²



PWDR - OPTION 2 (with shower)



5 | 3 | 1 | 2.5 | 2 | 2

create your dream

For further information, please visit www.boldliving.com.au

