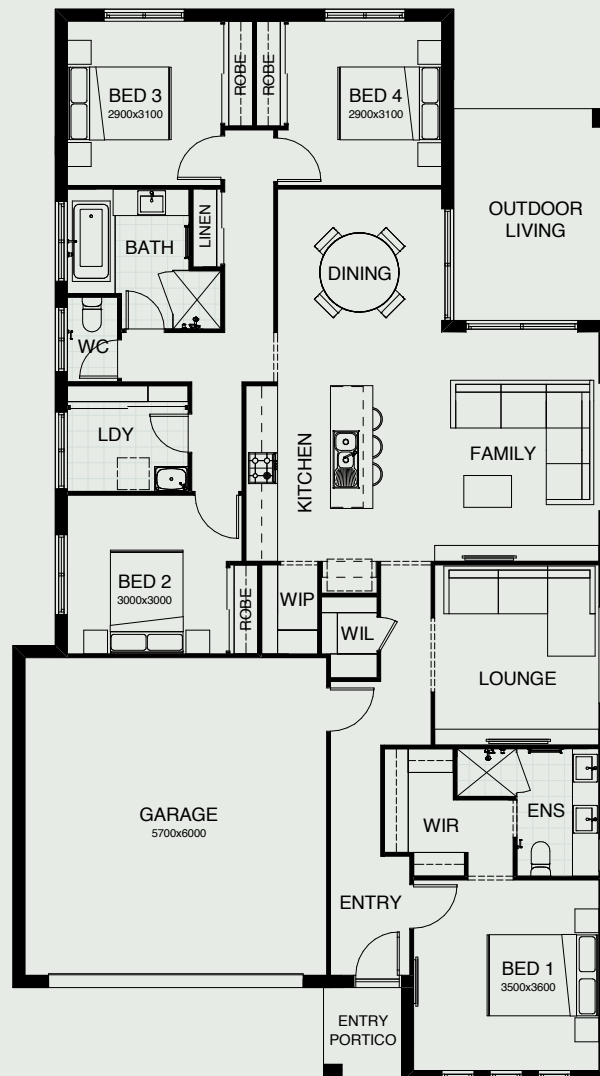


PORTOFINO 203

Another four bedroom home that is cleverly designed for families and entertaining. Featuring a seamless flow between kitchen, dining and alfresco, this design presents irresistible entertaining options! Including a butlers pantry and separate study, this home has everything!



FRONTAGE	12.5m
EXTERIOR LENGTH	20.28m
EXTERIOR WIDTH	11.30m
TOTAL FLOOR AREA	203.4m²



4 | 2 | 1 | 2 | 2

create your dream

For further information, please visit www.boldliving.com.au

