



**BOLD**  
LIVING

RIPLEY DISPLAY CENTRE

*create your dream*

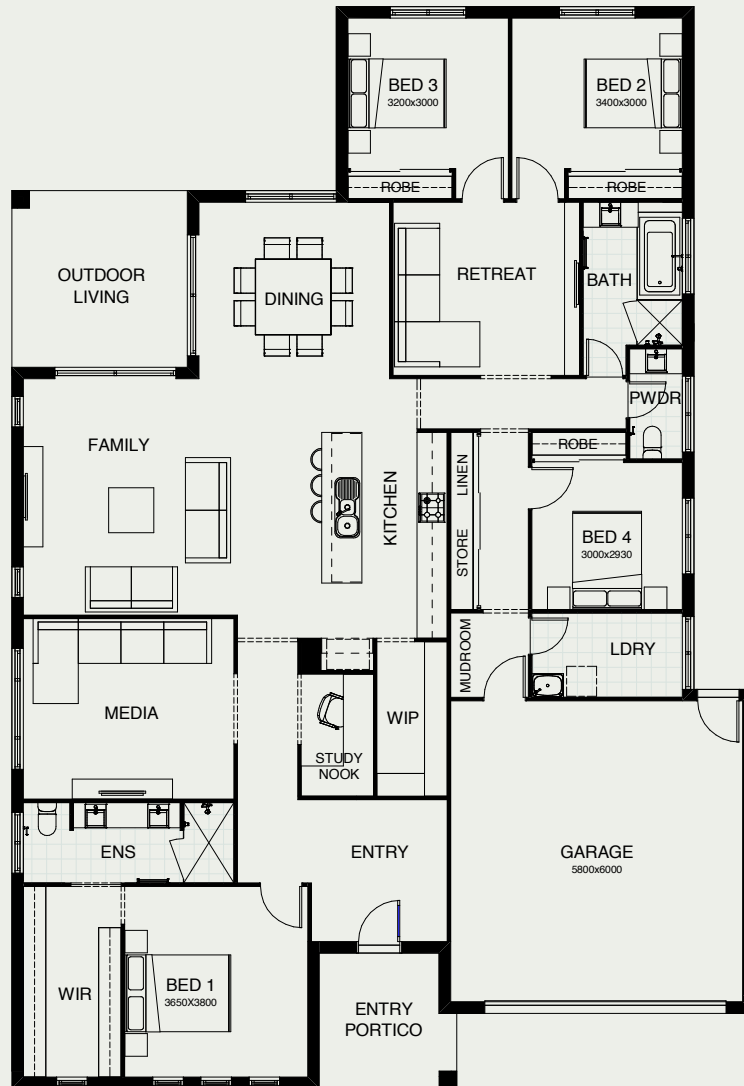


# ARDANA 270

Light, airy, open plan living all on one level! Clever design means this stunning home will suit everyone in your family. A large alfresco space is the perfect place to entertain and the well designed kitchen makes it easy. There's a separate media room, and parents can retreat to the privacy of their large master bedroom suite, located well away from the childrens' rooms.



FRONTAGE	16m
EXTERIOR LENGTH	21.57m
EXTERIOR WIDTH	14.80m
TOTAL FLOOR AREA	270.30m <sup>2</sup>

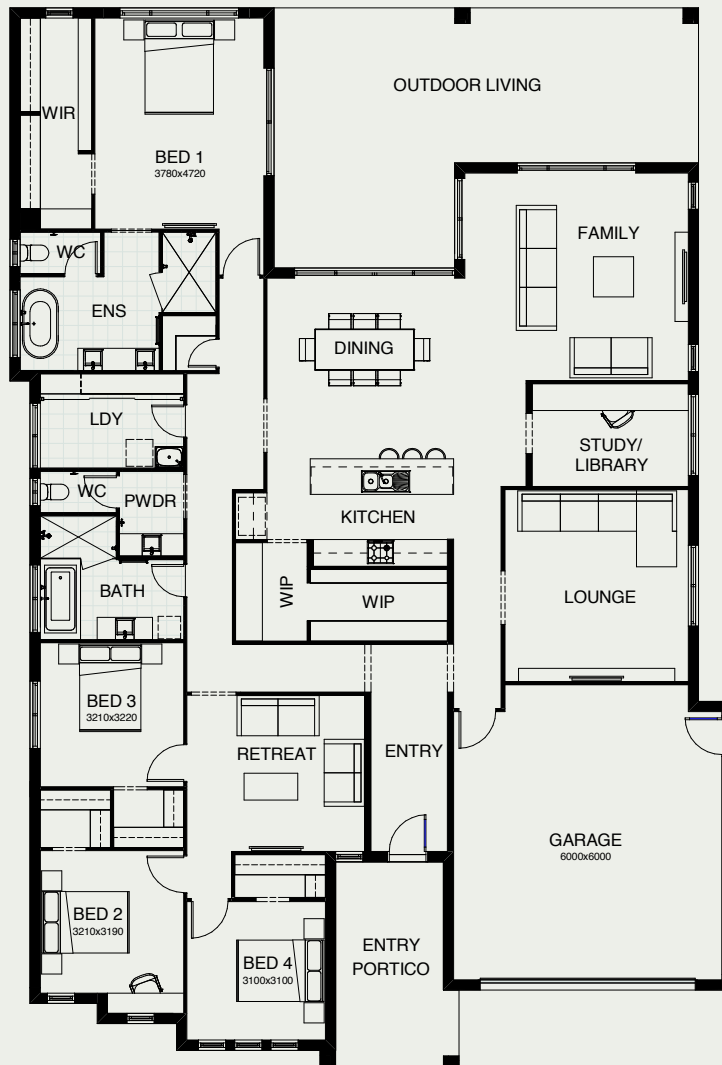


# ATHENA 349

Life revolves around the central core of the four bedroom Athena design, with the kitchen, dining and family room all seamlessly connected to the outdoor living and entertaining space. There's a media room to watch your favourite movies, a separate study, a kids' retreat and a generously sized master suite positioned for peace and privacy.



FRONTAGE	17.4m
EXTERIOR LENGTH	23.80m
EXTERIOR WIDTH	16.16m
TOTAL FLOOR AREA	349.20m <sup>2</sup>

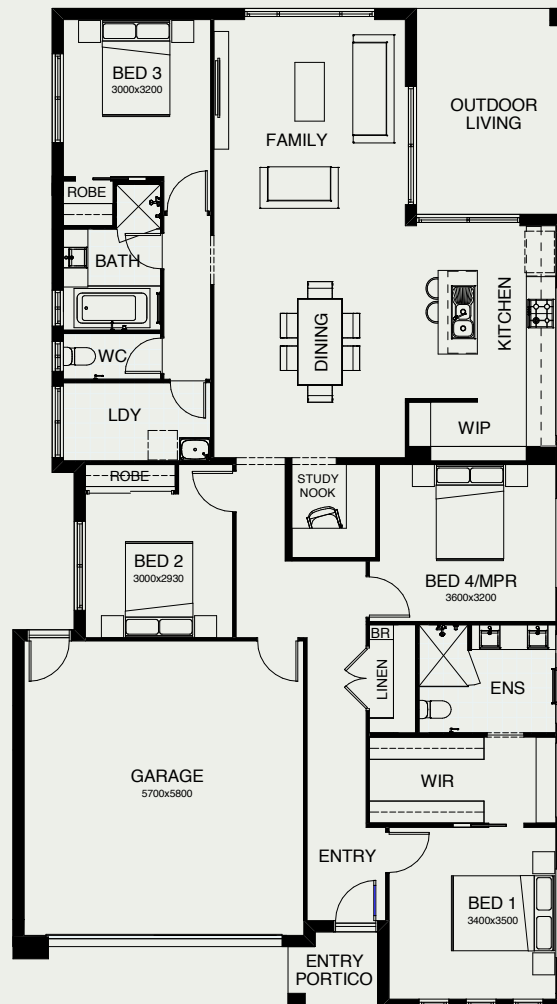


# SOPHIA M 22

Everything essential is included in this smart single level design, from the multi-purpose room, perfect for relaxing, to the open plan family, dining and kitchen space at the heart of the home – connecting directly with the outdoor entertaining area. There's also a separate study, and the master bedroom is complete with ensuite and walk-in robe.



FRONTAGE	12.5m
EXTERIOR LENGTH	20.43m
EXTERIOR WIDTH	11.30m
TOTAL FLOOR AREA	212.00m <sup>2</sup>



# STOCKHOLM 270

Fabulous family living is the hallmark of this stunning four bedroom design. Upstairs is dedicated to private time – the master suite with an integrated private space where parents can unwind, adjoined by a large retreat and a convenient study nook. Downstairs the generously-sized media room is at the front of the house, there's a separate study, and the well-designed kitchen, dining and living area flows seamlessly out to the entertaining space at the rear.



FRONTAGE	12.5m
EXTERIOR LENGTH	16.15m
EXTERIOR WIDTH	11.30m
TOTAL FLOOR AREA	270.70m <sup>2</sup>



# VISIT A BOLD LIVING DISPLAY CENTRE



## BAHRS SCRUB

BALLARAT 215  
& SOPHIA 22

Menora Road  
Bahrs Scrub Q 4207

## CALOUNDRA

HUDSON 242  
& CALYPSO 187

Berry Terrace  
Caloundra Q 4551

## BURPENGARY

ATHENA 349  
& SOPHIA M 22

Brook Crescent, Burpengary  
(North Harbour) Q 4505

## NEWPORT

NEWPORT 28  
& ZEUS 333

Spinnaker Boulevard  
Newport Q 4020

## NORTH LAKES

NEWPORT 216  
& STOCKHOLM 267

Attenborough Circuit  
North Lakes Q 4509

## PALLARA

SOPHIA 240 &  
NEWMARKET 277

2 Brookbent Road  
Pallara Q 4110

## PLAINLAND

FALCON 204  
& ARDANA 231

Barcoo Drive  
Plainland Q 4341

## SOUTH RIPLEY

ARDANA 270, ATHENA 349,  
SOPHIA M 22, STOCKHOLM 270

Soul Crescent  
Ripley Q 4306

## UPPER KEDRON

STOCKHOLM M 304

Canvey Road  
Upper Kedron Q 4055

## 1800 GO BOLD

49 Flinders Pde, North Lakes Q 4509

[www.boldliving.com.au](http://www.boldliving.com.au)

*create your dream*