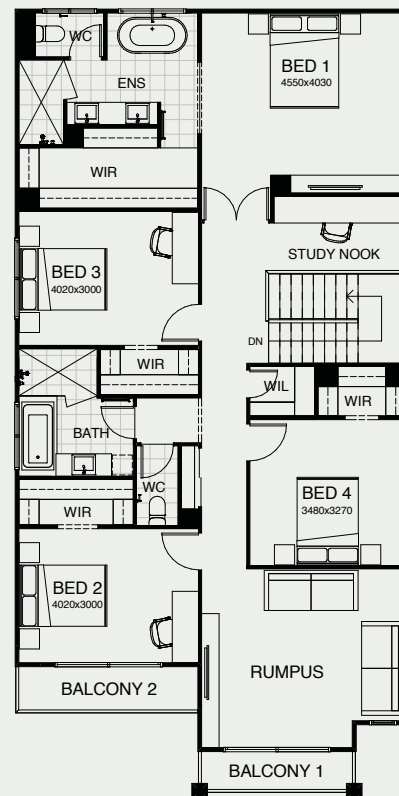
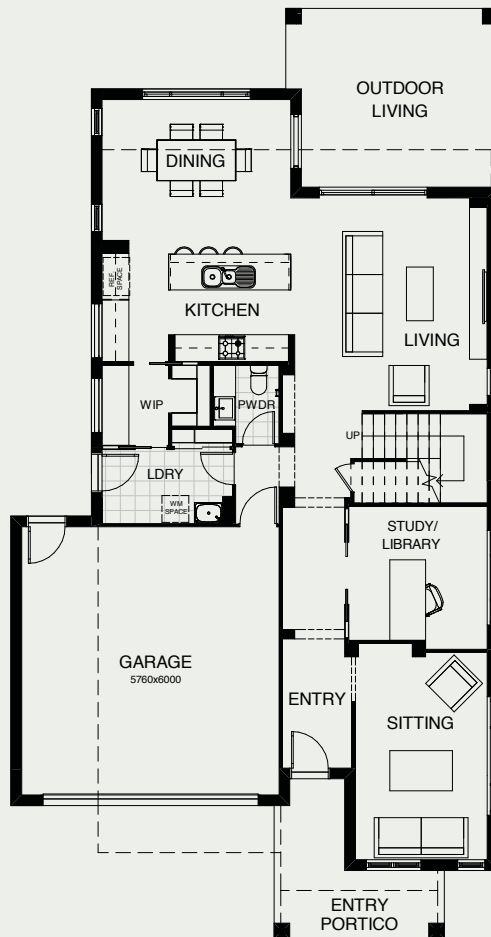


ZEUS 324

The best of contemporary architecture combines with intelligent design thinking in this two storey home. Four bedrooms, including a grand master suite with a massive walk-in robe, are upstairs. There's also a well-placed kids' retreat. Downstairs there's a large study, a walk-in pantry and integrated open plan living spaces tempting you out to the alfresco area.



FRONTAGE	12.1m
EXTERIOR LENGTH	20.82m
EXTERIOR WIDTH	10.90m
TOTAL FLOOR AREA	324.20m ²



 4 |
  3 |
  1 |
  2.5 |
  2 |
  2

create your dream

For further information, please visit www.boldliving.com.au

