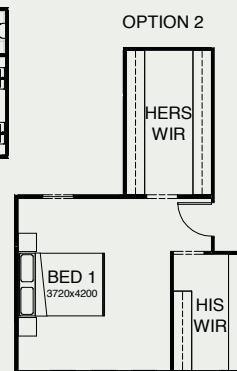
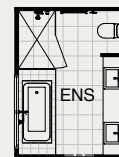
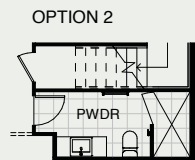
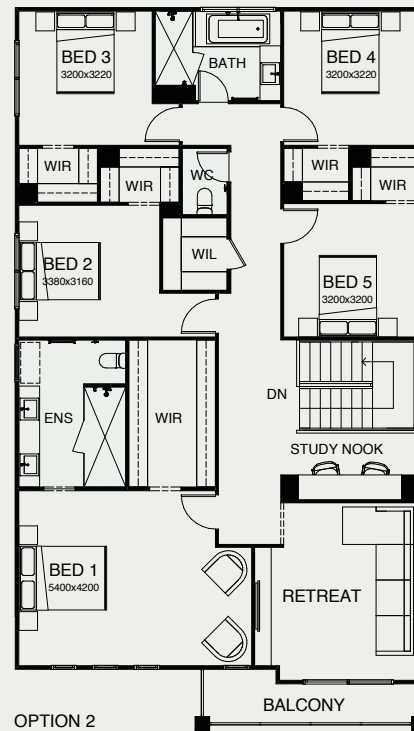
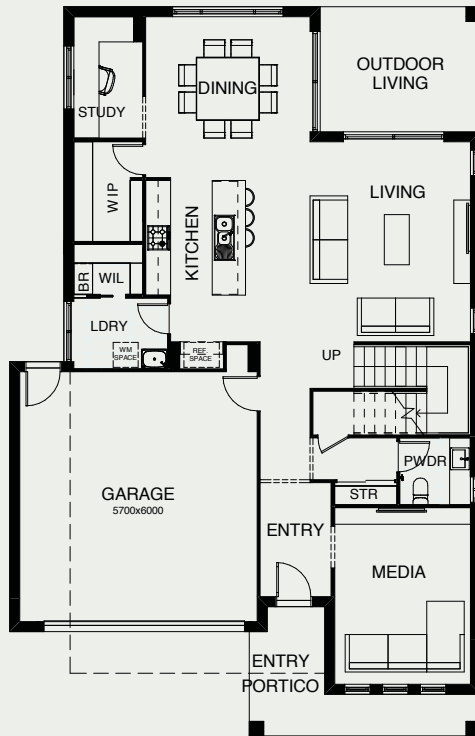


# STOCKHOLM 333

Fabulous family living is the hallmark of this stunning five bedroom design variation. Upstairs is dedicated to private time – the master suite with an integrated private space where parents can unwind, adjoined by a large retreat and a convenient study nook. Downstairs the generously-sized media room is at the front of the house, there's a separate study, and the well-designed kitchen, dining and living area flows seamlessly out to the entertaining space at the rear.



FRONTAGE	12.50m
EXTERIOR LENGTH	17.50m
EXTERIOR WIDTH	11.30m
TOTAL FLOOR AREA	333.10m <sup>2</sup>



5 | 3 | 1 | 2.5 | 2 | 2

*create your dream*

For further information, please visit [www.boldliving.com.au](http://www.boldliving.com.au)

