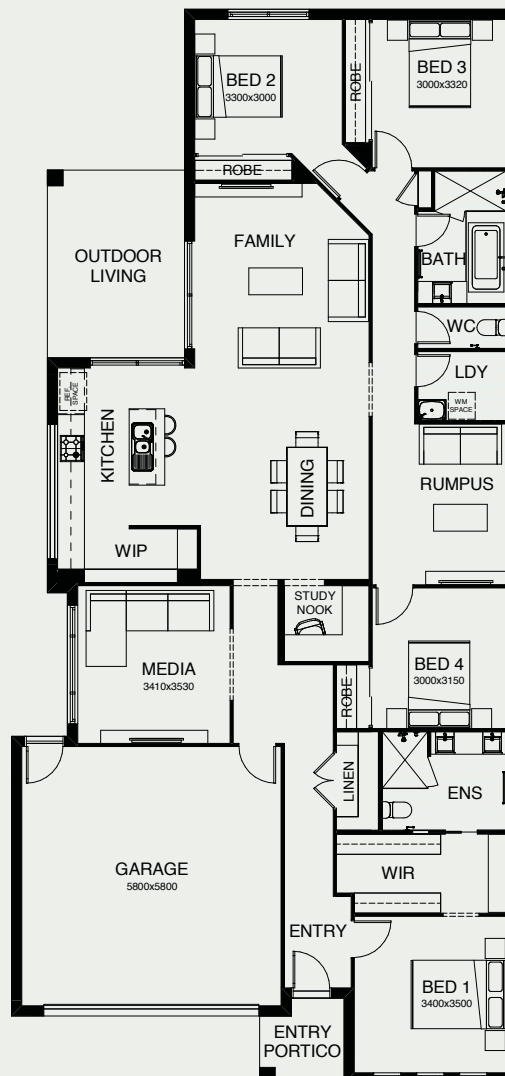


# SOPHIA 25 RUMPUS

Everything essential is included in this smart single level design, from the multi-purpose room, perfect for relaxing, to the open plan family, dining and kitchen space at the heart of the home – connecting directly with the outdoor entertaining area. There’s also a separate study, and the master bedroom is complete with ensuite and walk-in robe.



FRONTAGE	12.5m
EXTERIOR LENGTH	24.03m
EXTERIOR WIDTH	11.30m
TOTAL FLOOR AREA	237.70m <sup>2</sup>



 4 | 
  3 | 
  1 | 
  2 | 
  study nook | 
  2

*create your dream*

For further information, please visit [www.boldliving.com.au](http://www.boldliving.com.au)

