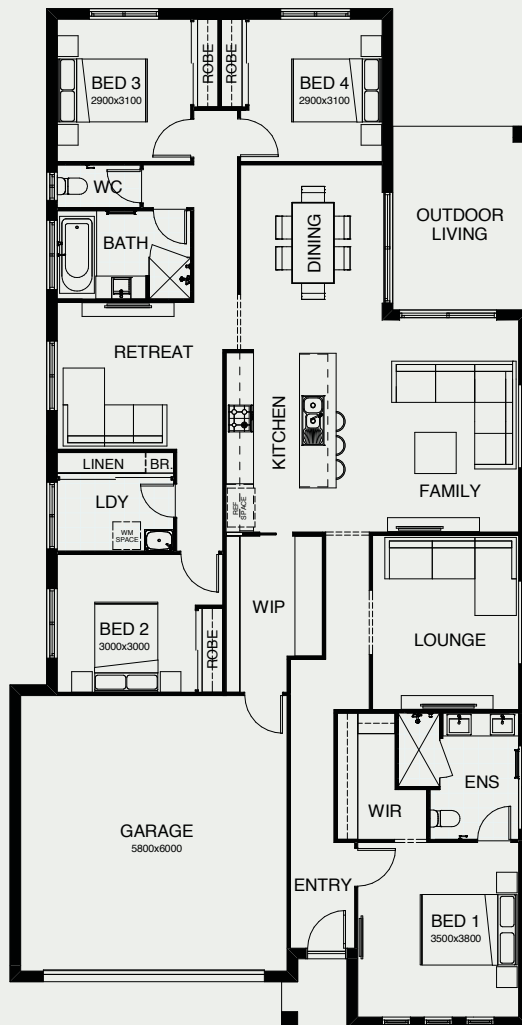


# PORTOFINO 225

Another clever four bedroom design that's ideally suited for a 14m frontage block. Parents will enjoy the privacy of a master suite positioned away from the children's bedrooms and rumpus area, while the seamless flow between the kitchen and family rooms presents irresistible entertaining options. Add in the butler's pantry and separate study, and this house has everything!



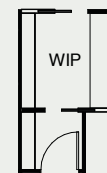
FRONTAGE	12.5m
EXTERIOR LENGTH	22.18m
EXTERIOR WIDTH	11.30m
TOTAL FLOOR AREA	225.30m <sup>2</sup>



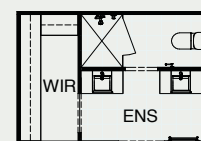
OPTION



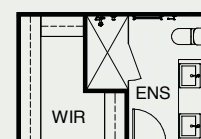
OPTION



OPTION



OPTION



*create your dream*

For further information, please visit [www.boldliving.com.au](http://www.boldliving.com.au)

