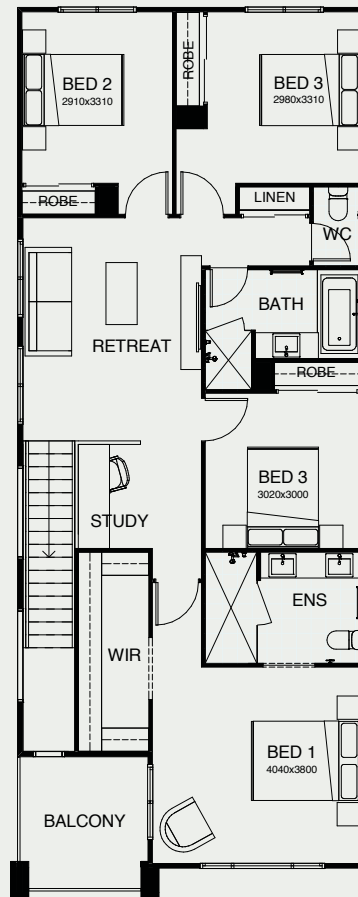
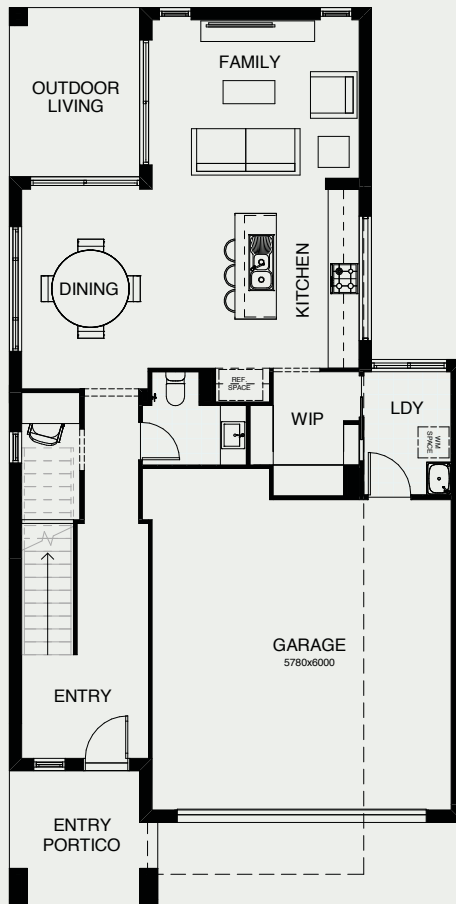


HUDSON 242

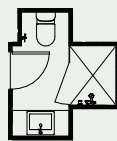
This exciting design combines stunning contemporary style with a very practical floor plan. Welcome to two storey living at its best, with living areas on the light and airy, open plan ground floor, and four bedrooms upstairs. Parents can take time out in their roomy master suite, which includes a walk-in robe and ensuite.



FRONTAGE	10m
EXTERIOR LENGTH	17.35m
EXTERIOR WIDTH	8.78m
TOTAL FLOOR AREA	242.90m ²



OPTION



4 | 2 | 1 | 2.5 | 2 | 2

create your dream

For further information, please visit www.boldliving.com.au

