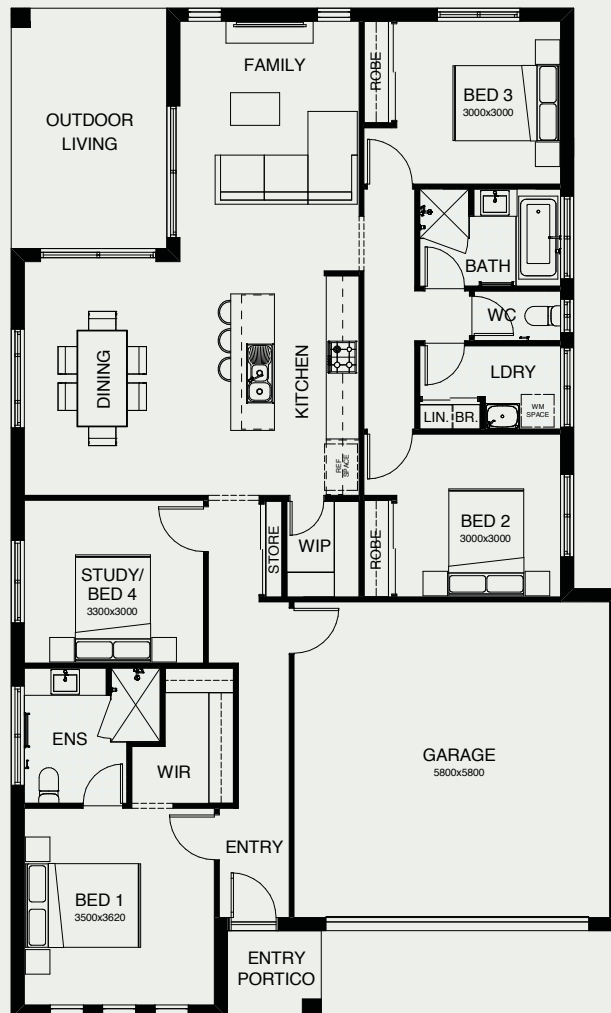


CALYPSO 189

Alfresco entertaining is the enjoyable focus of life in this contemporary, comfortable four bedroom family home, centred around its welcoming family room, dining and kitchen space. There's a designated computer nook and separate parents' and children's bedrooms zones.



FRONTAGE	12.5m
EXTERIOR LENGTH	18.84m
EXTERIOR WIDTH	11.20m
TOTAL FLOOR AREA	188.70m ²



create your dream

For further information, please visit www.boldliving.com.au

