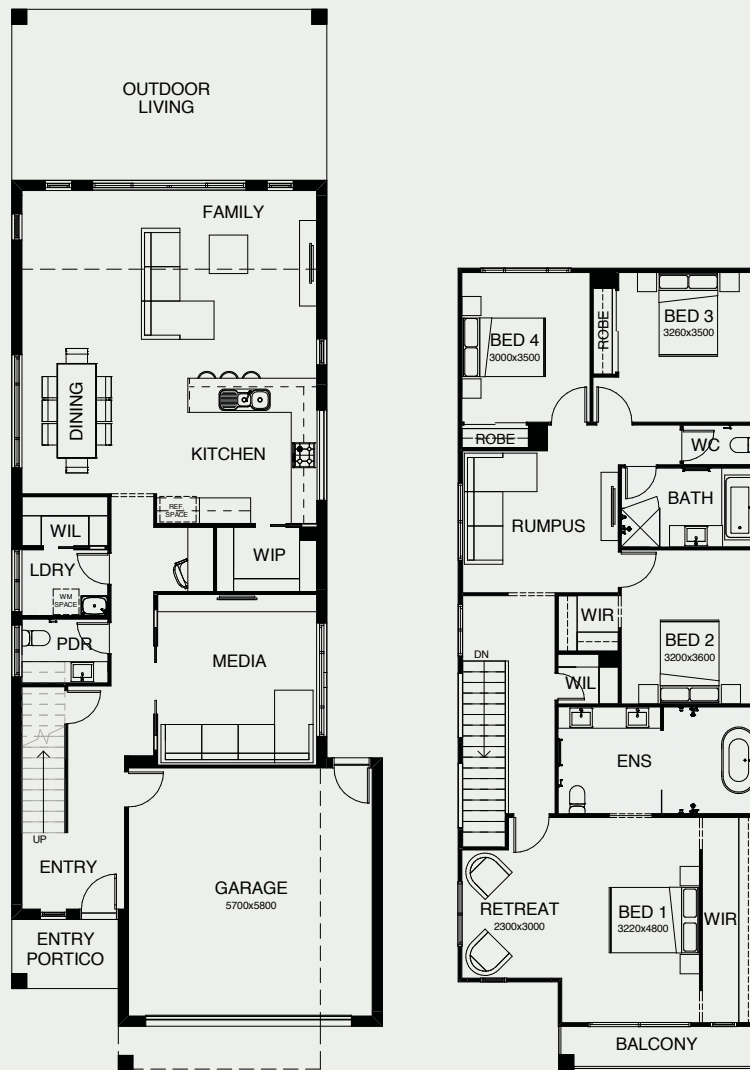


# BALMORAL 308

What a wonderful home to kick back and relax in! The kitchen is at its heart, opening directly to the living and dining areas and a roomy patio. The media room and study are also on the ground floor, while four bedrooms and a kids' retreat are located upstairs. The spacious master suite is ideally positioned for seclusion.



FRONTAGE	9.9m
EXTERIOR LENGTH	24.94m
EXTERIOR WIDTH	8.67m
TOTAL FLOOR AREA	308.80m <sup>2</sup>



4 | 
 3.5 | 
 1 | 
 2.5 | 
 1 | 
 2

*create your dream*

For further information, please visit [www.boldliving.com.au](http://www.boldliving.com.au)

