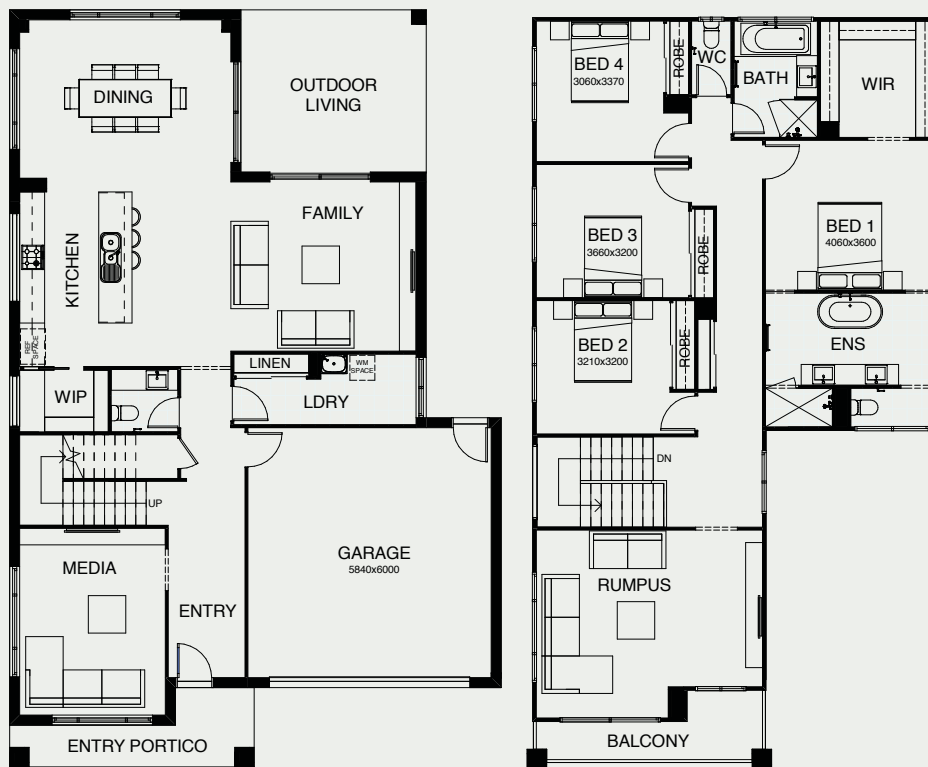


# AQUILA M 325

Be the envy of your friends, living in this ultra-spacious open plan family oriented home. You'll find yourself spending lots of time in the alfresco entertaining area that flows straight out from the integrated living, dining and kitchen space, enjoying the perfect balance of indoor and outdoor life. There's a dedicated media room, and a huge rumpus room upstairs that the kids can make their own.



FRONTAGE	13m
EXTERIOR LENGTH	18.17m
EXTERIOR WIDTH	11.80m
TOTAL FLOOR AREA	325.90m <sup>2</sup>



 4 | 
  3 | 
  1 | 
  2.5 | 
  2

*create your dream*

For further information, please visit [www.boldliving.com.au](http://www.boldliving.com.au)

